

901 FIFTH

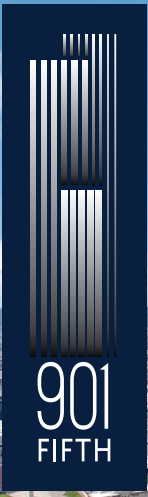
41 Stories. You could be one.

[VIEW ALL AVAILABILITES](#) 



 | **VANBARTON**
GROUP

9015thAvenue.com



Views of Downtown Seattle and Elliott Bay

BUILDING FEATURES

- + LEED Platinum Certified, WELL Certified, and Energy Star Certified
- + Fitness center with Pelotons, locker rooms, and showers
[view tour](#)
- + Secure bike storage and building showers
[view tour](#)
- + Remodeled 4th & 5th Ave lobbies with concierge service
[view 4th Ave](#) [view 5th Ave](#)
- + State-of-the-art video conferencing technology installed in the large conference/training facility in the 5th Avenue lobby as well as the boardroom located on the 27th floor
[view 5th floor conference center](#) [view 27th floor boardroom](#)
- + Ingress and egress off both Marion St. and Madison St. to the building parking garage



Renovated Lobby



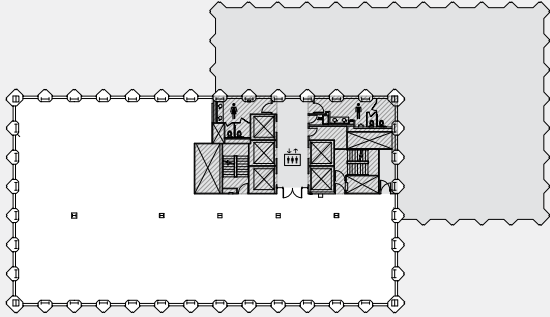
Building Conference Room



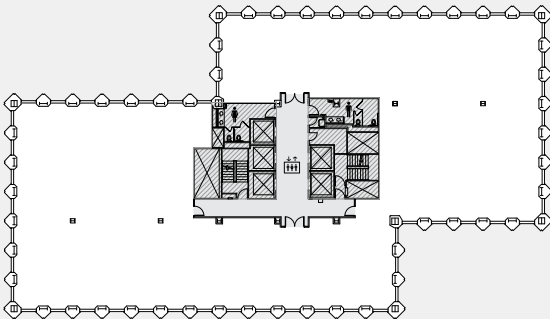
Building Fitness Center

PLANS

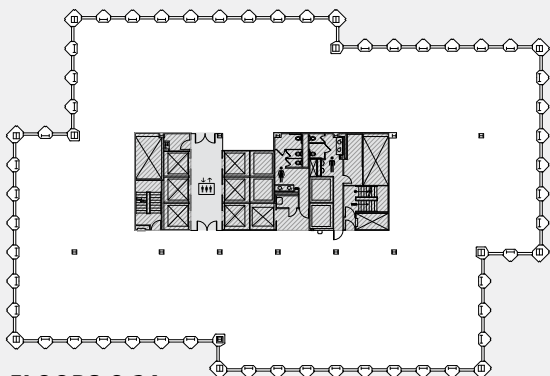
901 Fifth delivers on the promise of state-of-the-art infrastructure with 540,000+ square feet of open and efficient floor plans.



FLOORS 38-41
8,339 SF



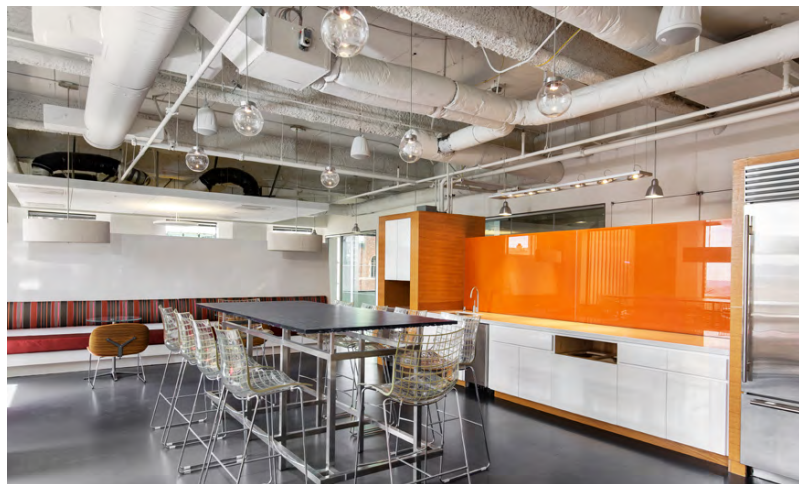
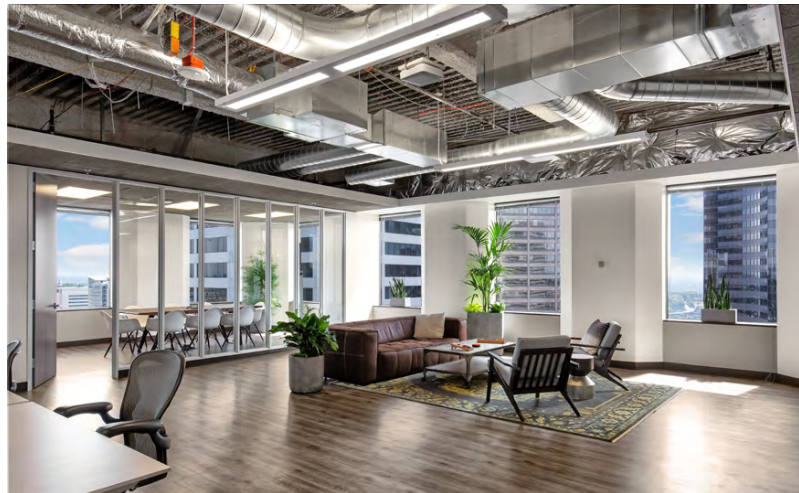
FLOORS 27-37
13,786 SF

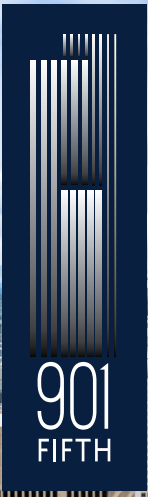


FLOORS 6-24
17,428 SF



TENANT SPACES





North facing views

PREMIER LOCATION

- + One block from I-5 with easy access to both northbound and southbound lanes
- + Close proximity to ferries, light rail and mass transit
- + Surrounded by a wide variety of Seattle's finest restaurants and easy grab & go dining options

FIND YOUR SPACE



South facing views of Pioneer Square & SoDo



EXCLUSIVELY OFFERED BY:



LLOYD LOW
+1 206 607 1796
lloyd.low@jll.com

JOE GOWAN
+1 206 607 1738
joe.gowan@jll.com

